













Balliemeanoch Pumped Storage Hydro (PSH)

Community Pre-Scoping
Engagement Presentation

13th September 2021

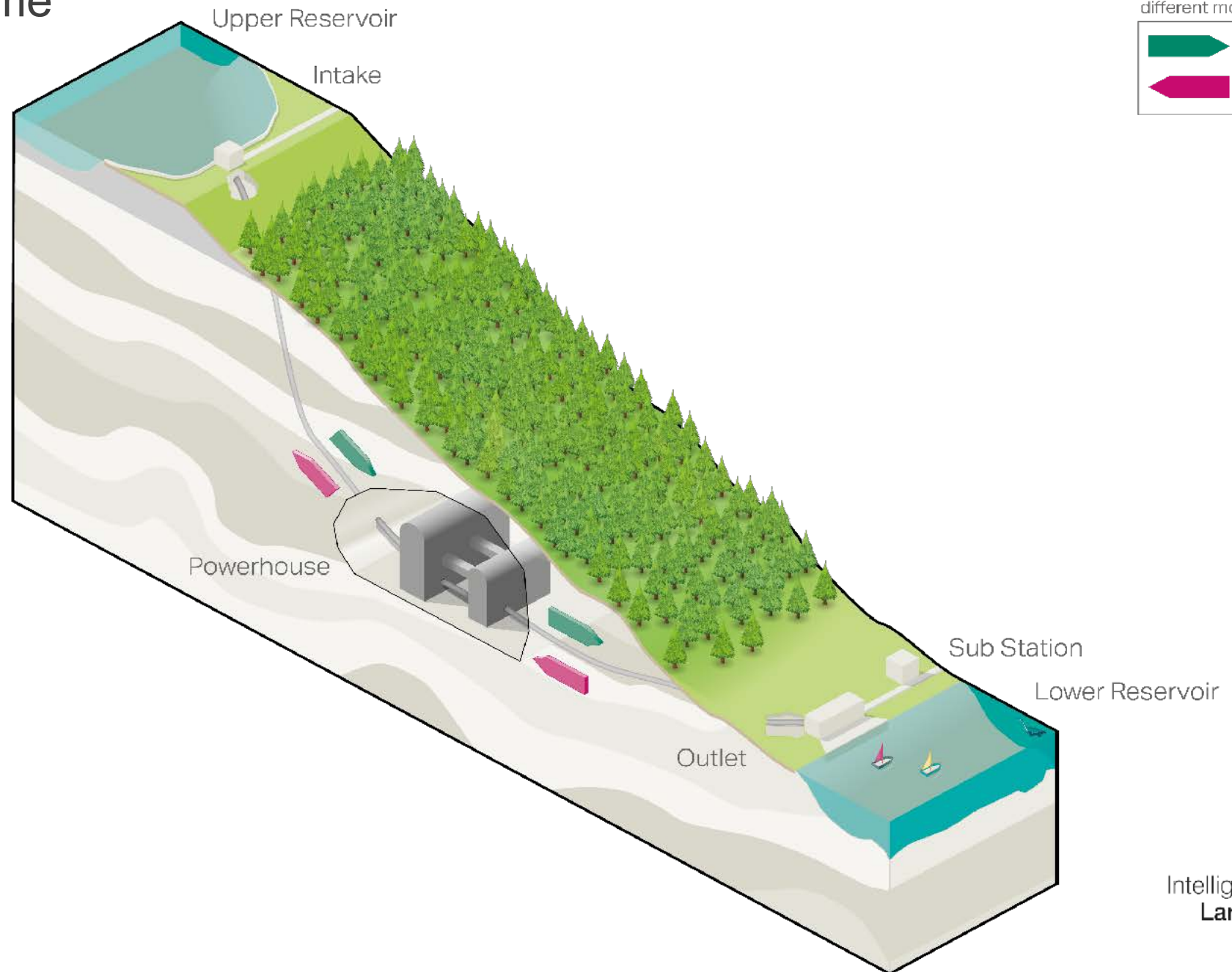
Project Team

 Mark Wilson 	 Ross McLaughlin 	 Greig Templeton 	 John Smith 
 David Lee AECOM	 James Scott AECOM	 Aimée Kilcoyne AECOM	 Victoria Deacon AECOM

Intelligent Land Investments (ILI)

- **2004** - Intelligent Land Investments is formed
- **Developing renewable energy projects** for over **15 years** and has since diversified into PSH as it seeks to play its part in meeting **Scotland's future energy needs**
- **2017 - ILI Group Plc** was formed with the express aim of achieving planning consents for three **Pumped Storage Hydro Sites (PSH)** in **Scotland**
- **Red John PSH** project in development; the proposed **450 megawatt (MW)** scheme located near **Dores, south of Inverness**

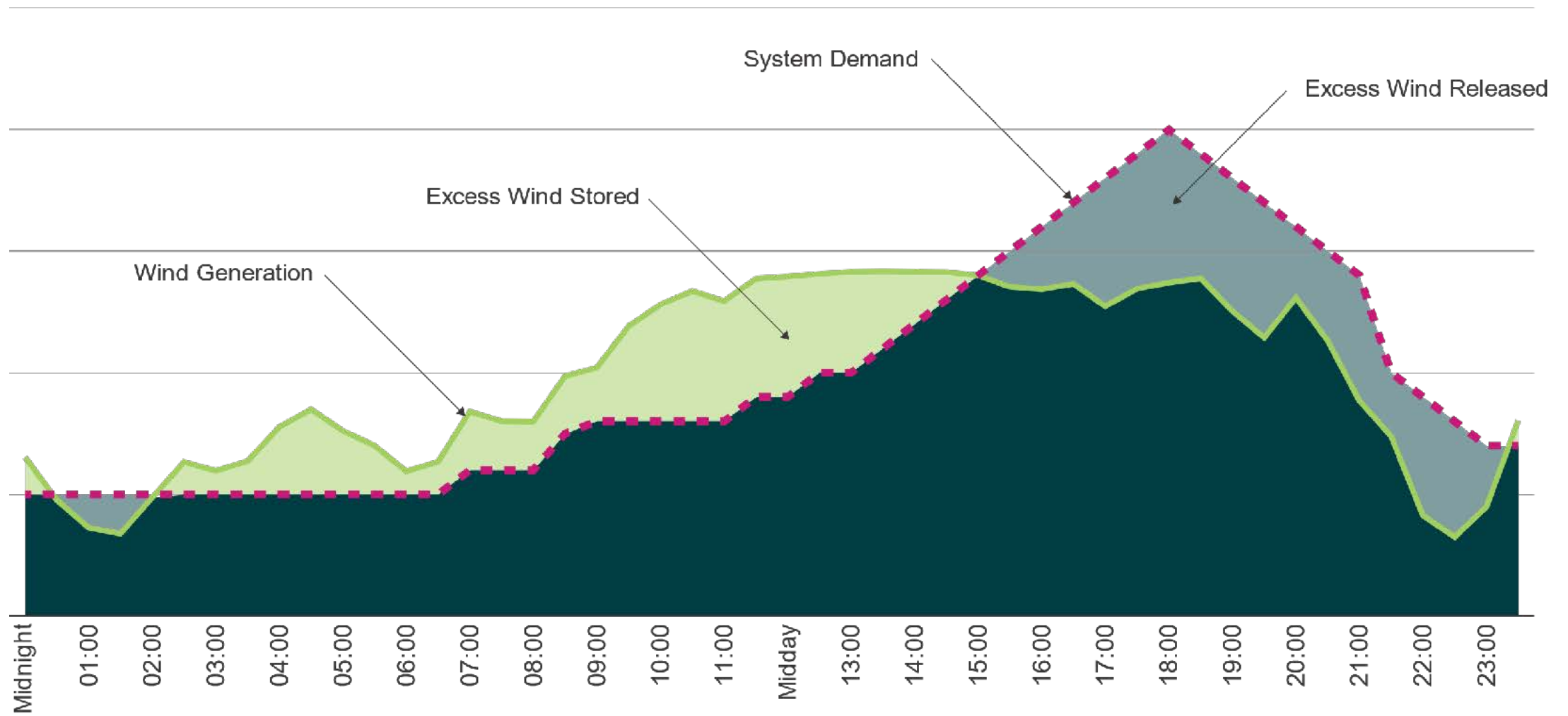
Typical PSH Scheme



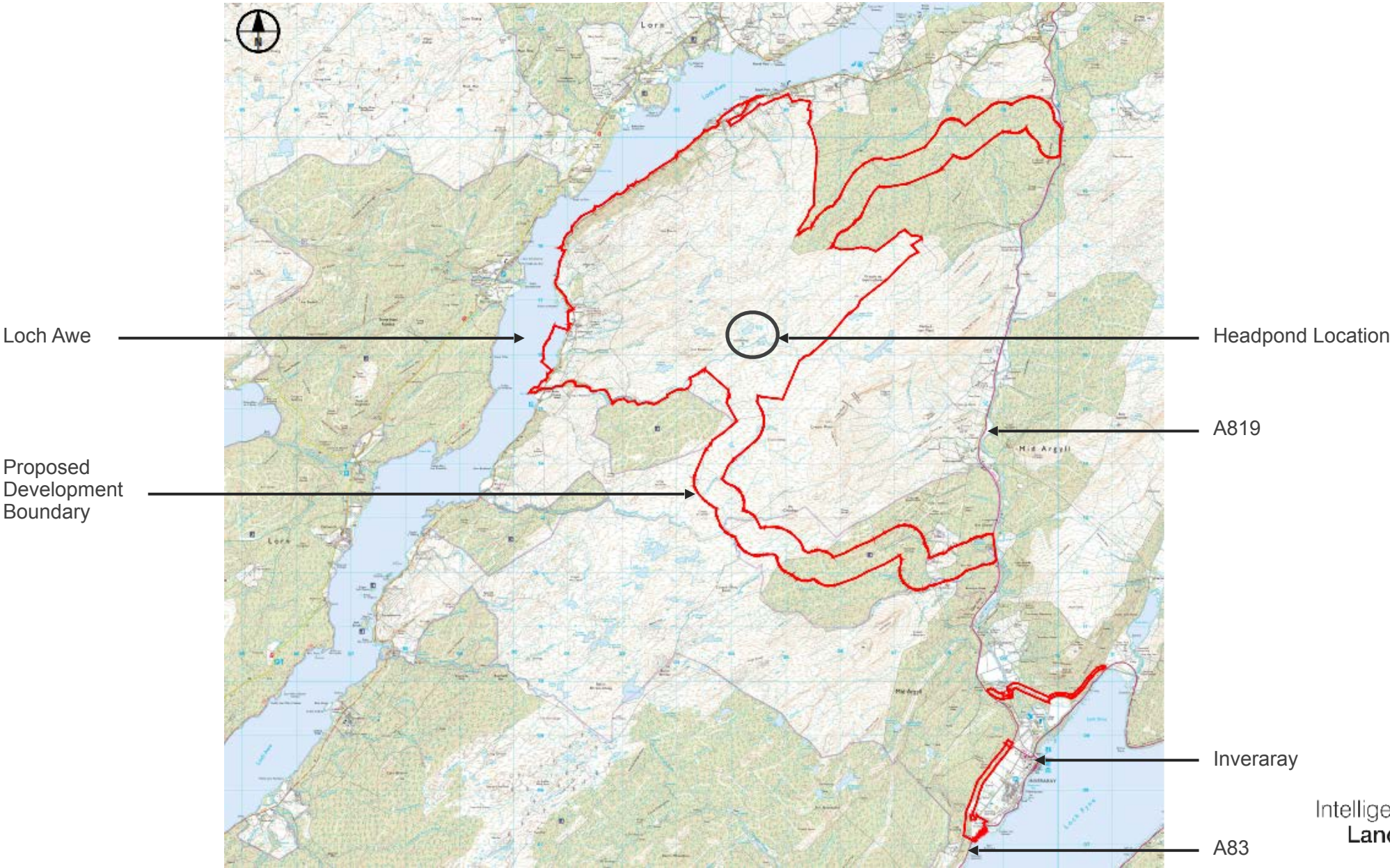
The direction of flow during different modes of use



Philosophy Behind PSH



Balliemeanoch PSH - Site Location



Balliemeanoch PSH – Outline Description



Storage capacity up to **45,000 megawatt hours (MWh)** per cycle



4.5 million homes worth of energy within one cycle **for a year**



Approximately **1.5 GW installed electrical generation capacity** (subject to further investigation)



Site access from the **East via the A819**, proposed northern and southern access route
Access routes around Inveraray **North** and **South** between A83 and A819.

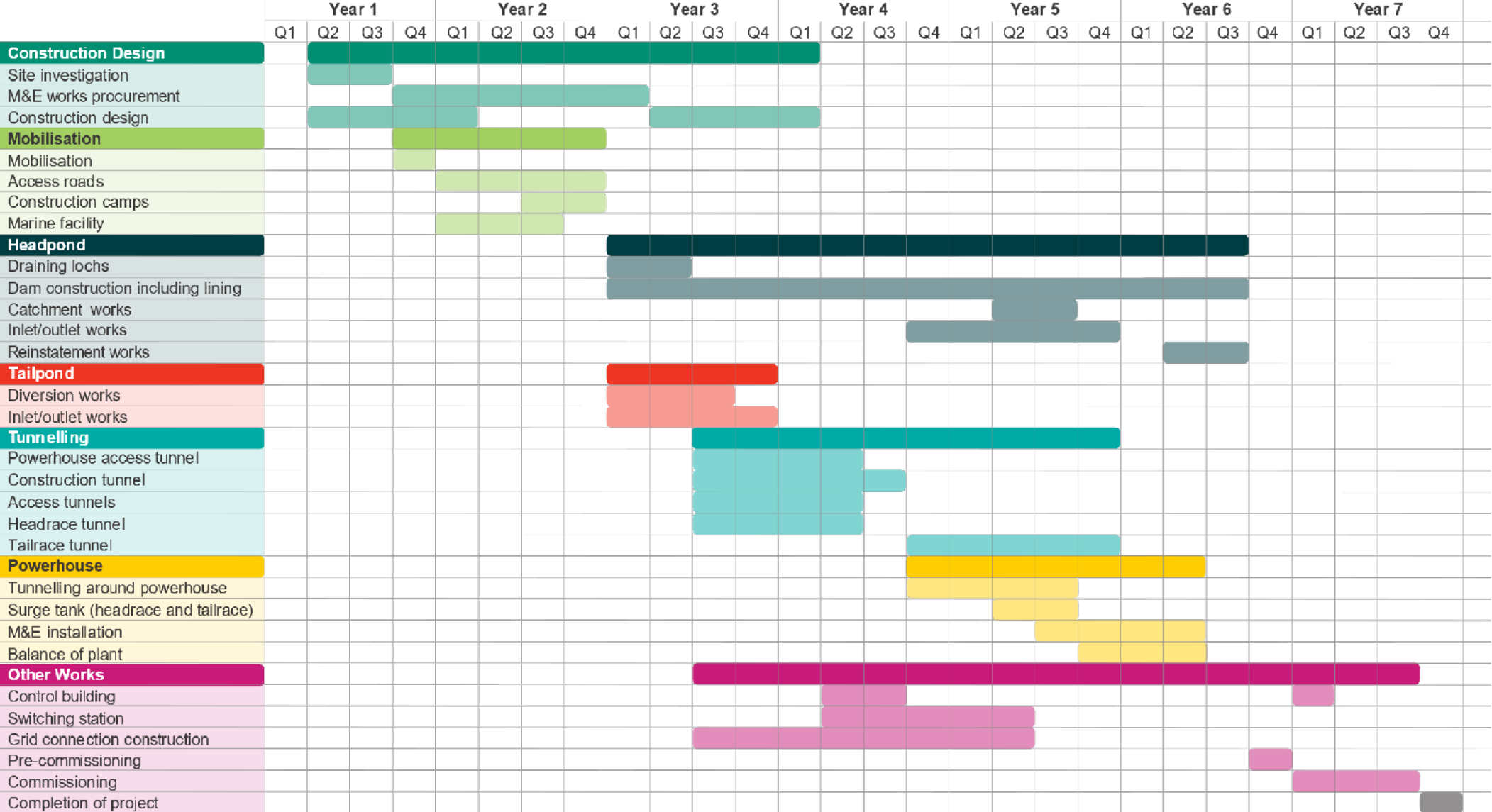


Utilisation of **existing access tracks** wherever possible.



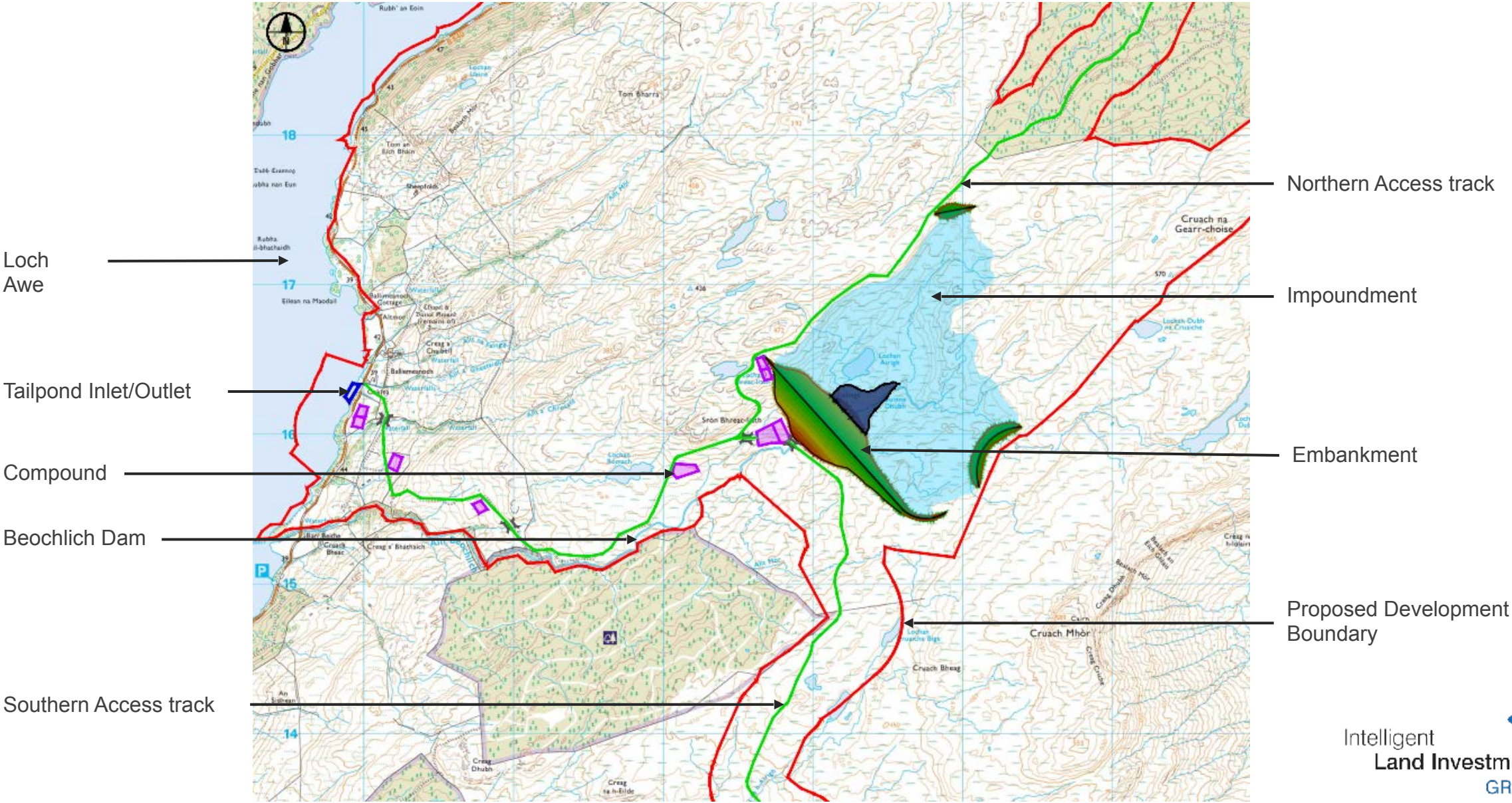
Estimated 7 year construction programme. However, **peak construction activity** anticipated **around years 3 & 4** during the construction of tunnels, waterways and headpond

Indicative Construction Programme



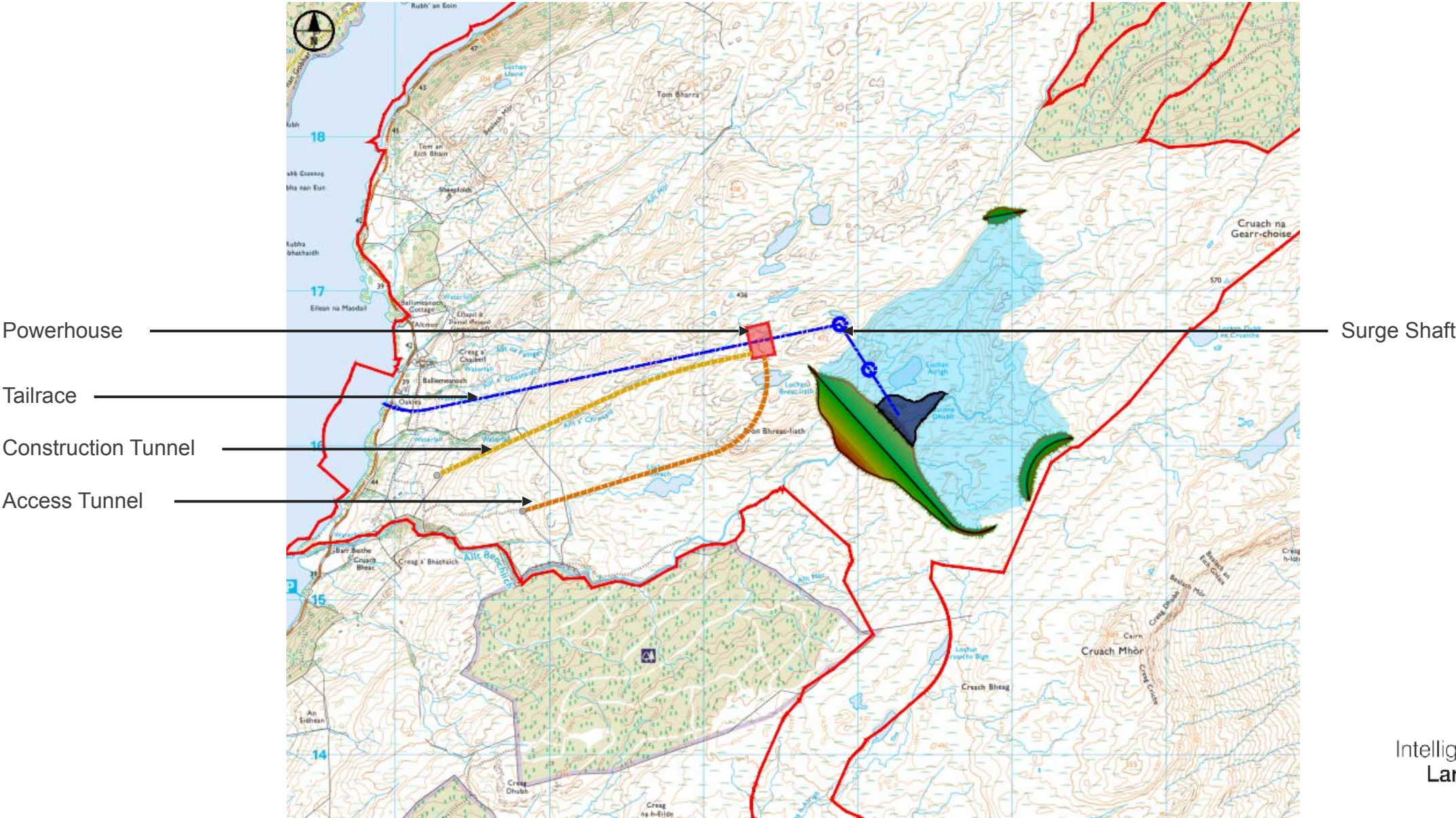
Balliemeanoch PSH – Indicative General Arrangement

Above Ground Infrastructure



Balliemeanoch PSH – Indicative General Arrangement

Below Ground Infrastructure

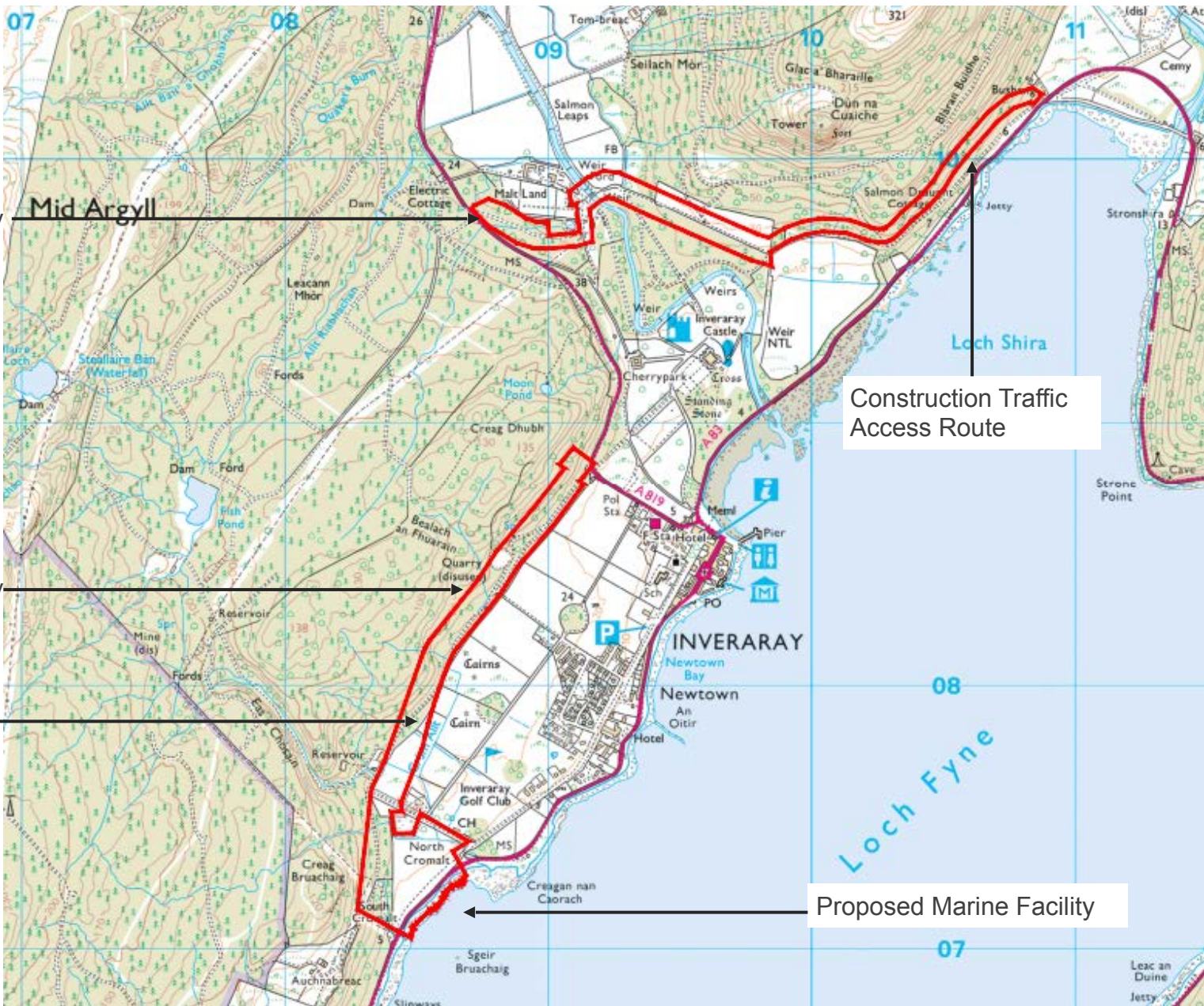


Balliemeanoch PSH – Access Routes - Inveraray

Proposed Development Boundary

Proposed Development Boundary

Abnormal Indivisible Loads Route



Construction Traffic Access Route

Proposed Marine Facility



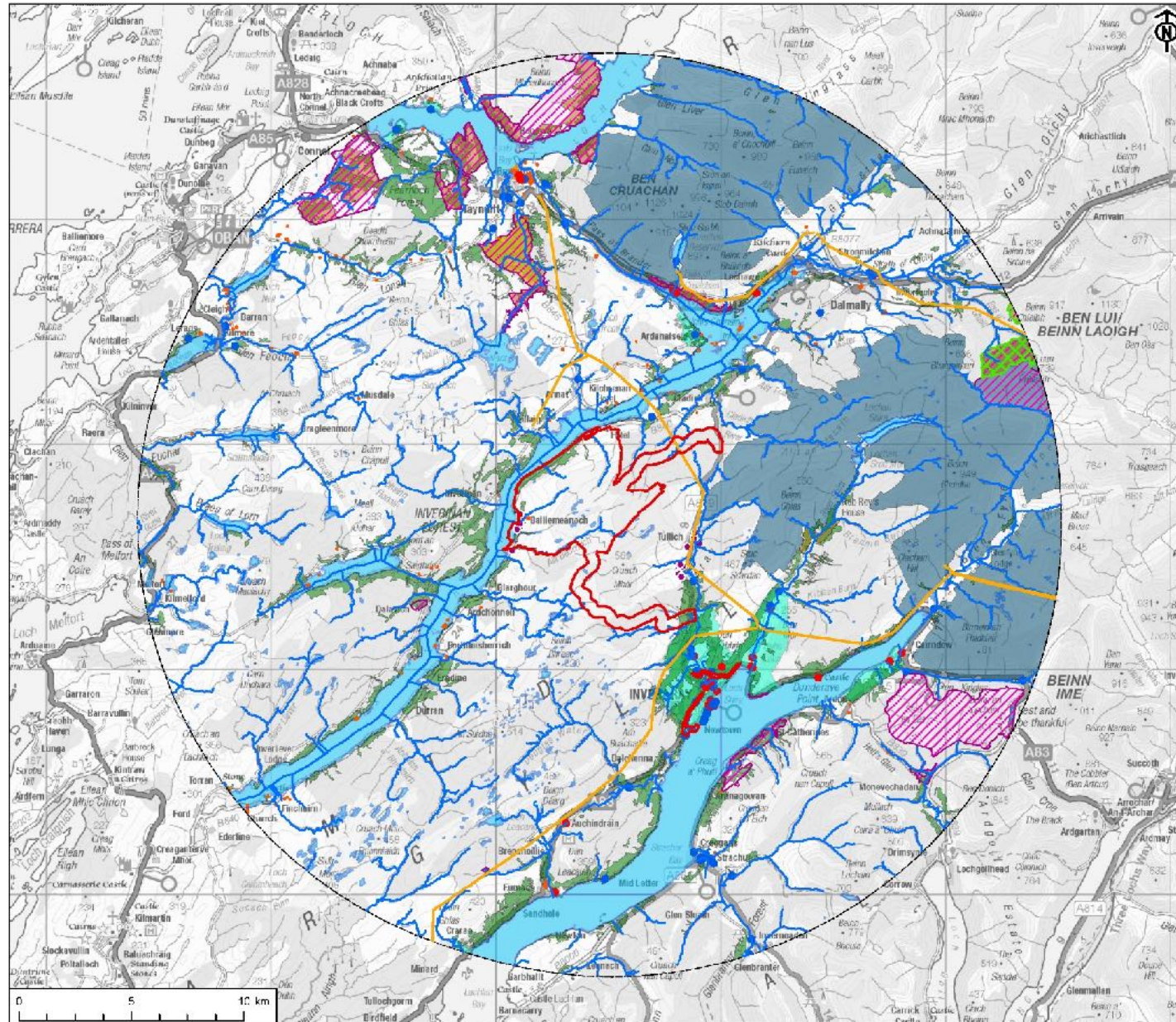
Example of Embankment
Megget Reservoir, Scotland

Example Power Cavern (Underground)



Manapouri Hydroelectric
Power Station, New Zealand

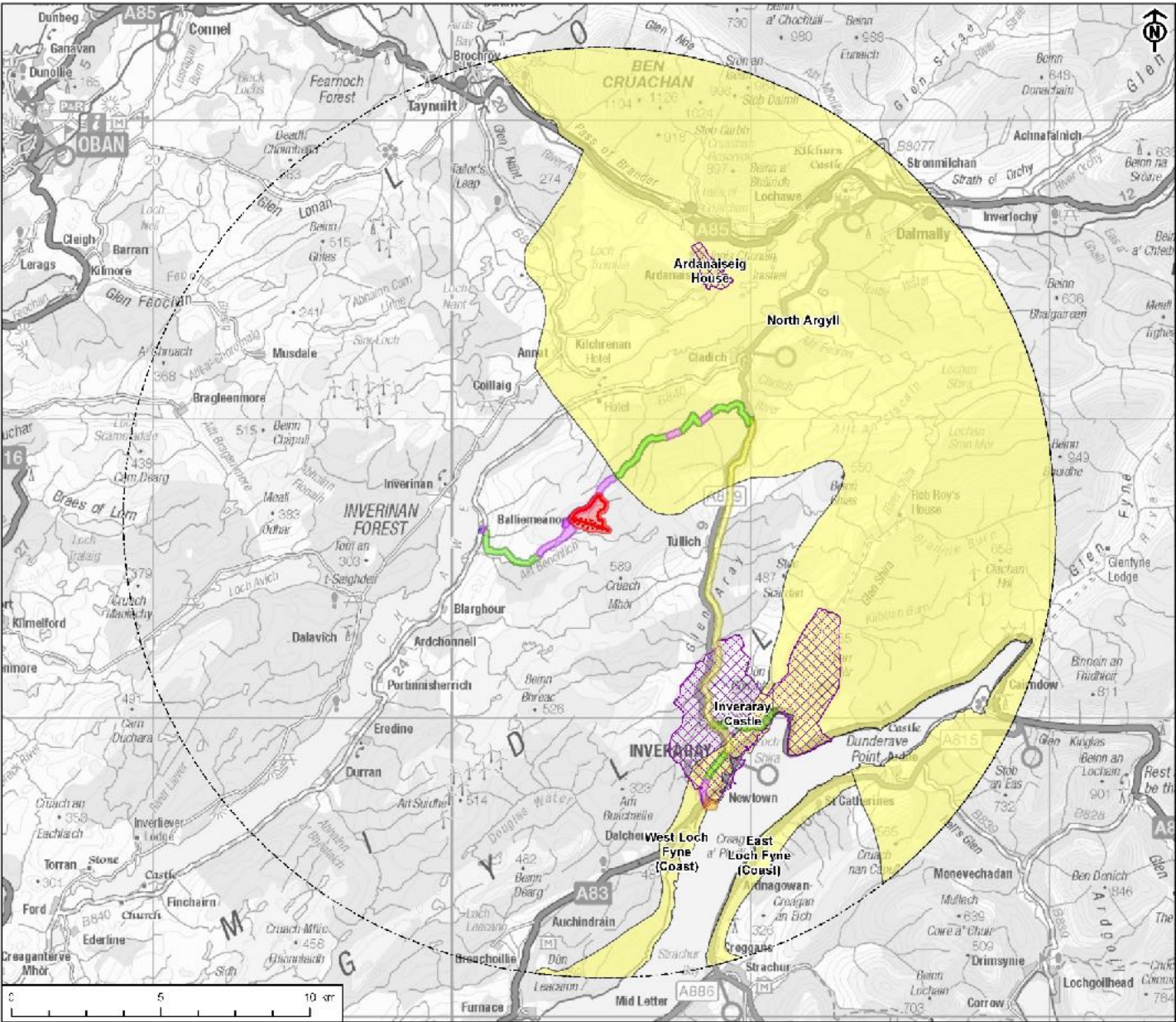
Key Environmental Constraints



KEY

- Proposed Development Boundary
- 20km Study Area
- Historic Conservation Areas
- Local Nature Reserve (LNR)
- Sites of Special Scientific Interest (SSSI)
- Garden and designed landscape
- Scheduled Monument
- Ancient Woodland
- National Nature Reserve (NNR)
- Special Area of Conservation (SAC)
- Special Protected Area
- Waterbody
- Electricity Transmission Line
- River
- Noise Sensitive Receptors
- Listed Buildings by Category
- A
- B

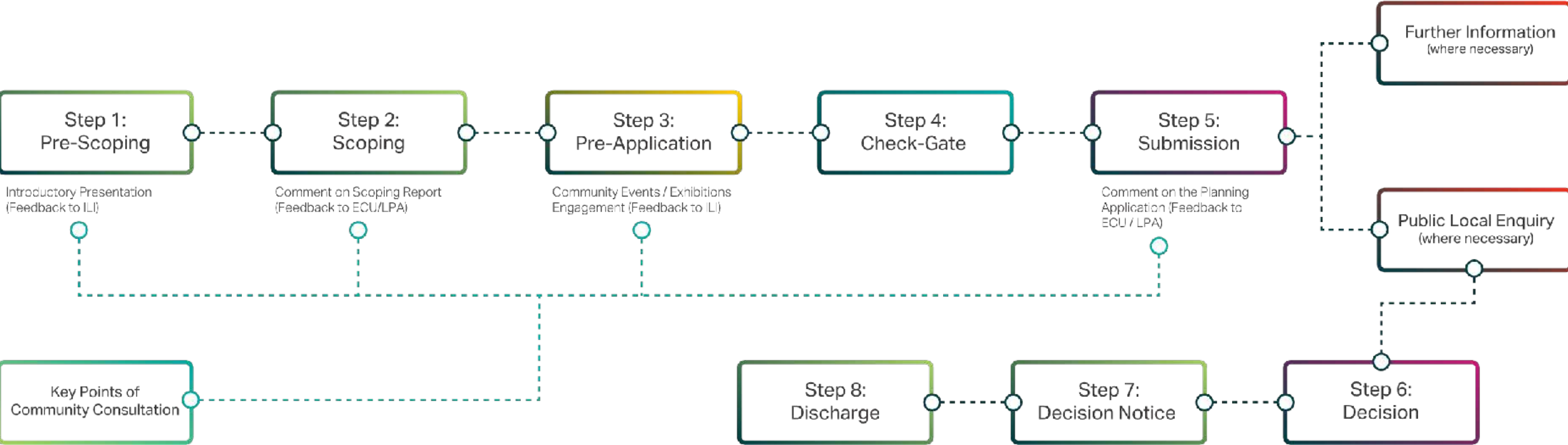
Key Landscape Constraints



Environmental Impact Assessment & Planning

- **Scoping Report** will be submitted **October 2021**
- **Initial discussions** have been made with
 - Energy Consents Unit at the Scottish Government
 - Argyll and Bute Council
- **Application** will be made to **Scottish Ministers** as a **Section 36 application**, second quarter **2022**

Application Process under S36/37 of the Electricity Act



Community Engagement

- All comments, thoughts, input and information welcome from local communities on the following: (list not exhaustive)
 - Accessibility
 - Recreation routes
 - Private water supplies
 - Water use
 - Tourism
- Local community can also, at any time, engage with the development through ILI website www.balliemeanochpsh.co.uk or via the dedicated email inbox: PumpedStorage@aecom.com

Questions